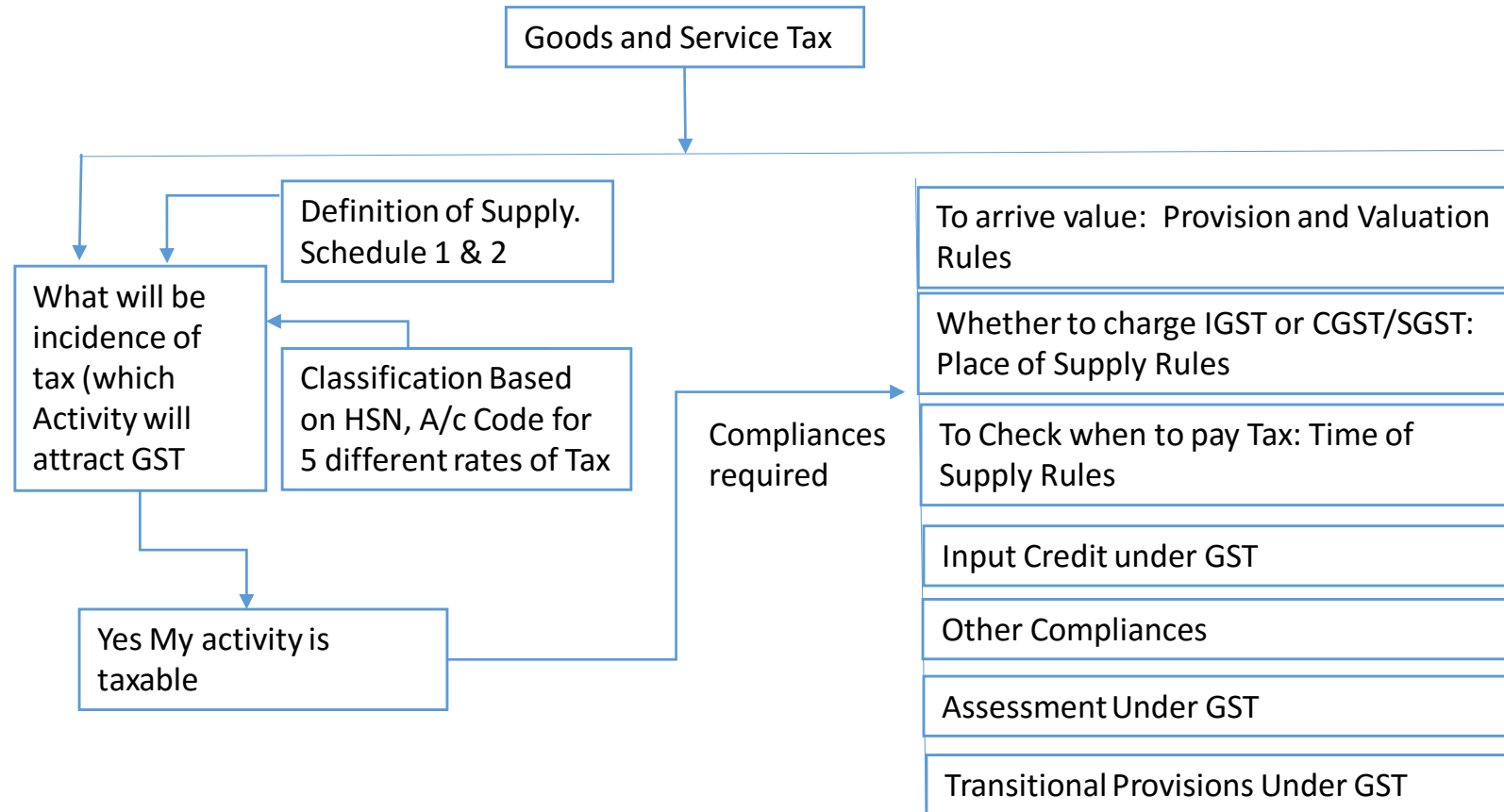
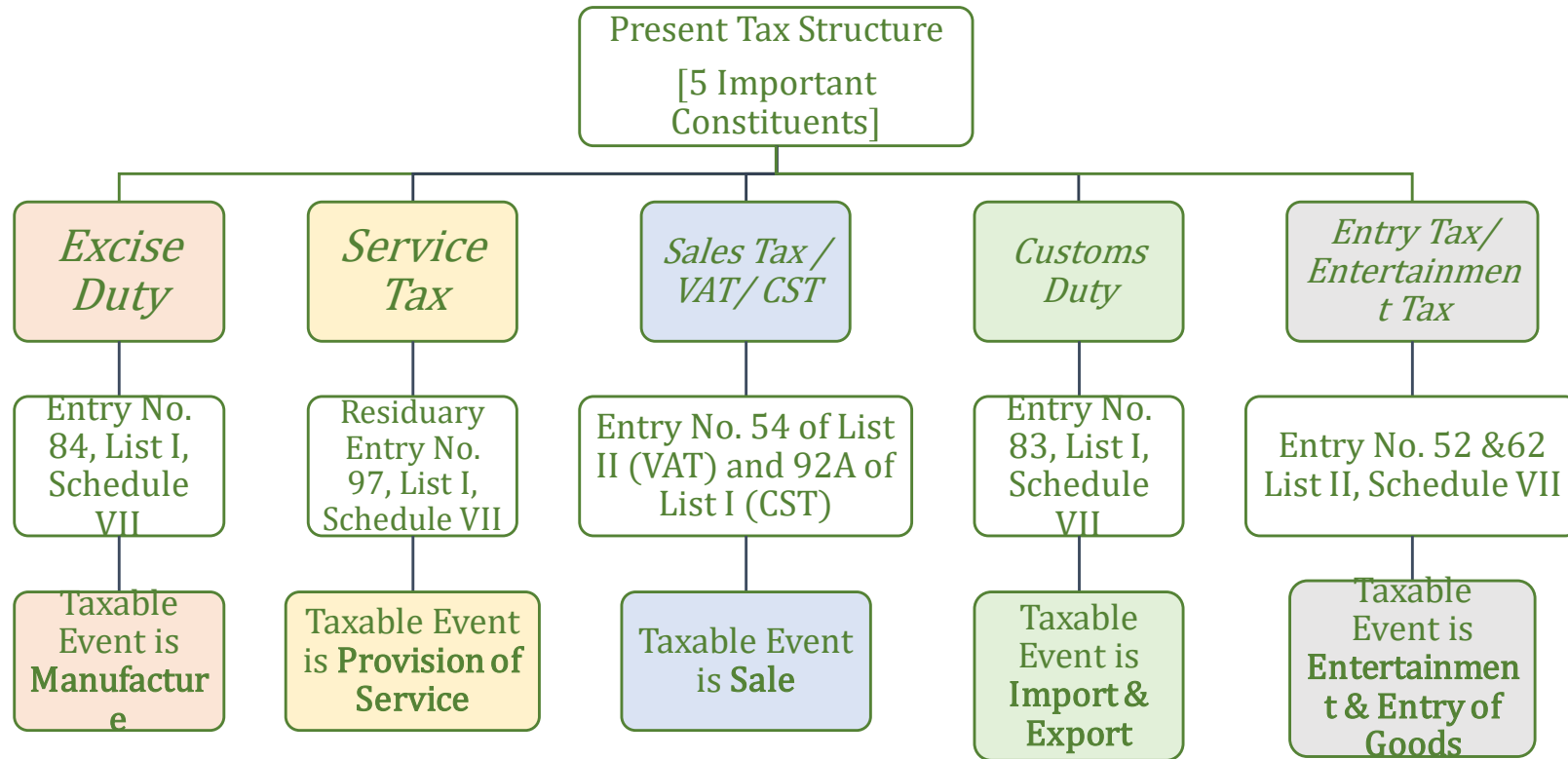


GST Concept and Road Map...



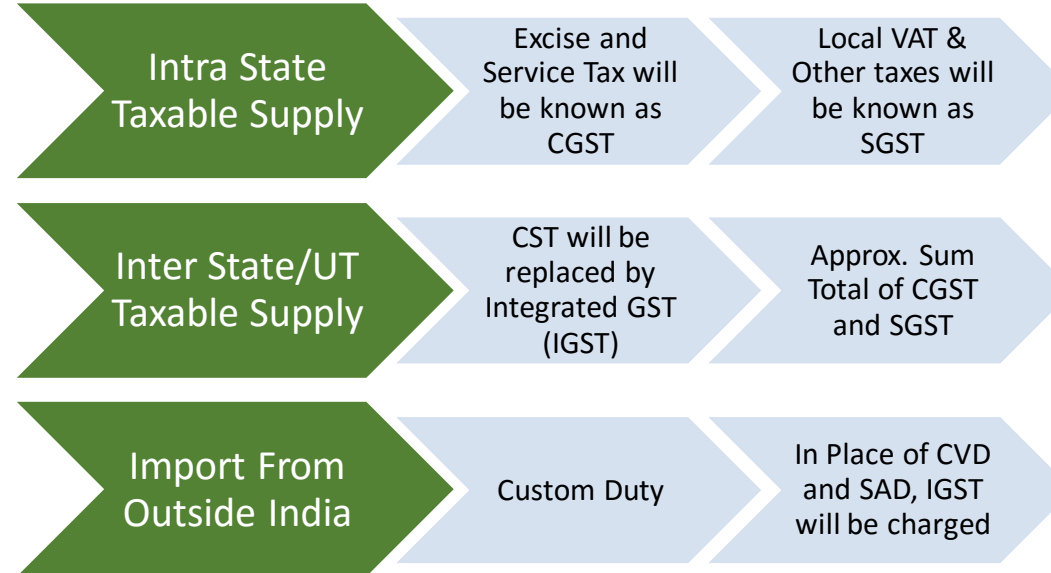


Present Indirect Tax Structure of India



Proposed GST Regime

- Proposed GST will replace the terms Manufacture, Sale, Provision of Service , Import and Export, Entry of goods with one term **“Supply”**



Basic Fundamental of GST

Definition as per Section 2 of the CGST Bill

- (6) “aggregate turnover” means the aggregate value of all taxable supplies (excluding the value of inward supplies on which tax is payable by a person on reverse charge basis), exempt supplies, exports of goods or services or both and inter-State supplies of persons having the same Permanent Account Number, to be computed on all India basis but excludes central tax, State tax, Union territory tax, integrated tax and Cess;
- (12) “associated enterprises” shall have the same meaning as assigned to it in section 92A of the Income-tax Act, 1961;

(17) “**business**” includes—

- (a) any trade, commerce, manufacture, profession, vocation, adventure, wager or any other similar activity, whether or not it is for a pecuniary benefit;
- (b) any activity or transaction in connection with or incidental or ancillary to sub-clause (a);
- (c) any activity or transaction in the nature of sub-clause (a), whether or not there is volume, frequency, continuity or regularity of such transaction;
- (d) supply or acquisition of goods including capital goods and services in connection with commencement or closure of business;
- (e) provision by a club, association, society, or any such body (for a subscription or any other consideration) of the facilities or benefits to its members;

- (f) admission, for a consideration, of persons to any premises;
- (g) services supplied by a person as the holder of an office which has been accepted by him in the course or furtherance of his trade, profession or vocation;
- (h) services provided by a race club by way of totalisator or a license to book maker in such club ; and
- (i) any activity or transaction undertaken by the Central Government, a State Government or any local authority in which they are engaged as public authorities;

(18) “***business vertical***” means a distinguishable component of an enterprise that is engaged in the supply of individual goods or services or a group of related goods or services which is subject to risks and returns that are different from those of the other business verticals.

Explanation.—For the purposes of this clause, factors that should be considered in determining whether goods or services are related include—

- (a) the nature of the goods or services;
- (b) the nature of the production processes;
- (c) the type or class of customers for the goods or services;
- (d) the methods used to distribute the goods or supply of services;
and
- (e) the nature of regulatory environment (wherever applicable),
including banking, insurance, or public utilities;

- (19) “**capital goods**” means goods, the value of which is capitalized in the books of account of the person claiming the input tax credit and which are used or intended to be used in the course or furtherance of business;
- (20) “**casual taxable person**” means a person who occasionally undertakes transactions involving supply of goods or services or both in the course or furtherance of business, whether as principal, agent or in any other capacity, in a State or a Union territory where he has no fixed place of business;
- (30) “**composite supply**” means a supply made by a taxable person to a recipient consisting of two or more taxable supplies of goods or services or both, or any combination thereof, which are naturally bundled and supplied in conjunction with each other in the ordinary course of business, one of which is a principal supply;
- Illustration:* Where goods are packed and transported with insurance, the supply of goods, packing materials, transport and insurance is a composite supply and supply of goods is a principal supply.

(31) “**consideration**” in relation to the supply of goods or services or both includes—

- (a) any payment made or to be made, whether in money or otherwise, in respect of, in response to, or for the inducement of, the supply of goods or services or both, whether by the recipient or by any other person but shall not include any subsidy given by the Central Government or a State Government;
- (b) the monetary value of any act or forbearance, in respect of, in response to, or for the inducement of, the supply of goods or services or both, whether by the recipient or by any other person but shall not include any subsidy given by the Central Government or a State Government:

Provided that a deposit given in respect of the supply of goods or services or both shall not be considered as payment made for such supply unless the supplier applies such deposit as consideration for the said supply;

- (32) “***continuous supply of goods***” means a supply of goods which is provided, or agreed to be provided, continuously or on recurrent basis, under a contract, whether or not by means of a wire, cable, pipeline or other conduit, and for which the supplier invoices the recipient on a regular or periodic basis and includes supply of such goods as the Government may, subject to such conditions, as it may, by notification, specify;
- (33) “***continuous supply of services***” means a supply of services which is provided, or agreed to be provided, continuously or on recurrent basis, under a contract, for a period exceeding three months with periodic payment obligations and includes supply of such services as the Government may, subject to such conditions, as it may, by notification, specify;
- (47) “***exempt supply***” means supply of any goods or services or both which attracts *nil* rate of tax or which may be wholly exempt from tax under section 11, or under section 6 of the Integrated Goods and Services Tax Act, and includes non-taxable supply;

- (50) “***fixed establishment***” means a place (other than the registered place of business) which is characterized by a sufficient degree of permanence and suitable structure in terms of human and technical resources to supply services, or to receive and use services for its own needs;
- (52) “***goods***” means every kind of movable property other than money and securities but includes actionable claim, growing crops, grass and things attached to or forming part of the land which are agreed to be severed before supply or under a contract of supply;
- (59) “***input***” means any goods other than capital goods used or intended to be used by a supplier in the course or furtherance of business;
- (60) “***input service***” means any service used or intended to be used by a supplier in the course or furtherance of business;

(61) ***“Input Service Distributor”*** means an office of the supplier of goods or services or both which receives tax invoices issued under section 31 towards the receipt of input services and issues a prescribed document for the purposes of distributing the credit of central tax, State tax, integrated tax or Union territory tax paid on the said services to a supplier of taxable goods or services or both having the same Permanent Account Number as that of the said office;

- (62) “***input tax***” in relation to a registered person, means the central tax, State tax, integrated tax or Union territory tax charged on any supply of goods or services or both made to him and includes—
- (a) the integrated goods and services tax charged on import of goods;
 - (b) the tax payable under the provisions of sub-sections (3) and (4) of section 9;
 - (c) the tax payable under the provisions of sub-section (3) and (4) of section 5 of the Integrated Goods and Services Tax Act;
 - (d) the tax payable under the provisions of sub-section (3) and sub-section (4) of section 9 of the respective State Goods and Services Tax Act; or
 - (e) the tax payable under the provisions of sub-section (3) and sub-section (4) of section 7 of the Union Territory Goods and Services Tax Act, but does not include the tax paid under the composition levy;

67) “*inward supply*” in relation to a person, shall mean receipt of goods or services or both whether by purchase, acquisition or any other means with or without consideration;

(70) “*location of the recipient of services*” means,—

- (a) where a supply is received at a place of business for which the registration has been obtained, the location of such place of business;
- (b) where a supply is received at a place other than the place of business for which registration has been obtained (a fixed establishment elsewhere), the location of such fixed establishment;
- (c) where a supply is received at more than one establishment, whether the place of business or fixed establishment, the location of the establishment most directly concerned with the receipt of the supply; and
- (d) in absence of such places, the location of the usual place of residence of the recipient;

(71) “*location of the supplier of services*” means,—

- (a) where a supply is made from a place of business for which the registration has been obtained, the location of such place of business;
- (b) where a supply is made from a place other than the place of business for which registration has been obtained (a fixed establishment elsewhere), the location of such fixed establishment;
- (c) where a supply is made from more than one establishment, whether the place of business or fixed establishment, the location of the establishment most directly concerned with the provisions of the supply; and
- (d) in absence of such places, the location of the usual place of residence of the supplier;

- (73) “**market value**” shall mean the full amount which a recipient of a supply is required to pay in order to obtain the goods or services or both of like kind and quality at or about the same time and at the same commercial level where the recipient and the supplier are not related;
- (74) “**mixed supply**” means two or more individual supplies of goods or services, or any combination thereof, made in conjunction with each other by a taxable person for a single price where such supply does not constitute a composite supply;

Illustration: A supply of a package consisting of canned foods, sweets, chocolates, cakes, dry fruits, aerated drinks and fruit juices when supplied for a single price is a mixed supply. Each of these items can be supplied separately and is not dependent on any other. It shall not be a mixed supply if these items are supplied separately.

- (82) “***output tax***” in relation to a taxable person, means the tax chargeable under this Act on taxable supply of goods or services or both made by him or by his agent but excludes tax payable by him on reverse charge basis;
- (83) “***outward supply***” in relation to a taxable person, means supply of goods or services or both, whether by sale, transfer, barter, exchange, license, rental, lease or disposal or any other mode, made or agreed to be made by such person in the course or furtherance of business;

(85) “*place of business*” includes—

- (a) a place from where the business is ordinarily carried on, and includes a warehouse, a Godown or any other place where a taxable person stores his goods, supplies or receives goods or services or both; or
- (b) a place where a taxable person maintains his books of account; or
- (c) a place where a taxable person is engaged in business through an agent, by whatever name called;

(90) “*principal supply*” means the supply of goods or services which constitutes the predominant element of a composite supply and to which any other supply forming part of that composite supply is ancillary;

93) “*recipient*” of supply of goods or services or both, means—

- (a) where a consideration is payable for the supply of goods or services or both, the person who is liable to pay that consideration;
- (b) where no consideration is payable for the supply of goods, the person to whom the goods are delivered or made available, or to whom possession or use of the goods is given or made available; and
- (c) where no consideration is payable for the supply of a service, the person to whom the service is rendered,

and any reference to a person to whom a supply is made shall be construed as a reference to the recipient of the supply and shall include an agent acting as such on behalf of the recipient in relation to the goods or services or both supplied;

- (102) “**services**” means anything other than goods, money and securities but includes activities relating to the use of money or its conversion by cash or by any other mode, from one form, currency or denomination, to another form, currency or denomination for which a separate consideration is charged;
- (105) “**supplier**” in relation to any goods or services or both, shall mean the person supplying the said goods or services or both and shall include an agent acting as such on behalf of such supplier in relation to the goods or services or both supplied;
- (117) “**valid return**” means a return furnished under sub-section (1) of section 39 on which self-assessed tax has been paid in full;

(119) “***works contract***” means a contract for building, construction, fabrication, completion, erection, installation, fitting out, improvement, modification, repair, maintenance, renovation, alteration or commissioning of any immovable property wherein transfer of property in goods (whether as goods or in some other form) is involved in the execution of such contract;

Meaning of Supply as per Section 7 of the CGST law

7. (1) For the purposes of this Act, the expression “***supply***” includes—

- (a) all forms of supply of goods or services or both such as sale, transfer, barter, exchange, license, rental, lease or disposal made or agreed to be made for a consideration by a person in the course or furtherance of business;
- (b) import of services for a consideration whether or not in the course or furtherance of business;
- (c) the activities specified in Schedule I, made or agreed to be made without a consideration; and
- (d) the activities to be treated as supply of goods or supply of services as referred to in Schedule II.

(2) Notwithstanding anything contained in sub-section (1),—

- (a) activities or transactions specified in Schedule III; or
- (b) such activities or transactions undertaken by the Central Government, a State Government or any local authority in which they are engaged as public authorities, as may be notified by the Government on the recommendations of the Council, shall be treated neither as a supply of goods nor a supply of services..

(3) Subject to the provisions of sub-sections (1) and (2), the Government may, on the recommendations of the Council, specify, by notification, the transactions that are to be treated as—

- (a) a supply of goods and not as a supply of services; or
- (b) a supply of services and not as a supply of goods.

Schedule-I

*ACTIVITIES TO BE TREATED AS SUPPLY EVEN IF MADE
WITHOUT CONSIDERATION*

1. Permanent transfer or disposal of business assets where input tax credit has been availed on such assets.
2. Supply of goods or services or both between related persons or between distinct persons as specified in section 25, when made in the course or furtherance of business:

Provided that gifts not exceeding fifty thousand rupees in value in a financial year by an employer to an employee shall not be treated as supply of goods or services or both.

3. Supply of goods—

- (a) by a principal to his agent where the agent undertakes to supply such goods on behalf of the principal; or
- (b) by an agent to his principal where the agent undertakes to receive such goods on behalf of the principal.

4. Import of services by a taxable person from a related person or from any of his other establishments outside India, in the course or furtherance of business.

Schedule-II

ACTIVITIES TO BE TREATED AS SUPPLY OF GOODS OR SUPPLY OF SERVICES

1. Transfer

- (a)* Any transfer of the title in goods is a supply of goods;
- (b)* Any transfer of right in goods or of undivided share in goods without the transfer of title thereof, is a supply of services;
- (c)* Any transfer of title in goods under an agreement which stipulates that property in goods shall pass at a future date upon payment of full consideration as agreed, is a supply of goods.

2. Land and Building

- (a) any lease, tenancy, easement, license to occupy land is a supply of services;
- (b) any lease or letting out of the building including a commercial, industrial or residential complex for business or commerce, either wholly or partly, is a supply of services.

3. Treatment or process

Any treatment or process which is applied to another person's goods is a supply of services.

4. Transfer of business assets

- (a) where goods forming part of the assets of a business are transferred or disposed of by or under the directions of the person carrying on the business so as no longer to form part of those assets, whether or not for a consideration, such transfer or disposal is a supply of goods by the person;
- (b) where, by or under the direction of a person carrying on a business, goods held or used for the purposes of the business are put to any private use or are used, or made available to any person for use, for any purpose other than a purpose of the business, whether or not for a consideration, the usage or making available of such goods is a supply of services;

- (c) where any person ceases to be a taxable person, any goods forming part of the assets of any business carried on by him shall be deemed to be supplied by him in the course or furtherance of his business immediately before he ceases to be a taxable person, unless—
 - (i) the business is transferred as a going concern to another person; or
 - (ii) the business is carried on by a personal representative who is deemed to be a taxable person.

5. Supply of services

The following shall be treated as supply of service, namely:—

- (a) renting of immovable property;
- (b) construction of a complex, building, civil structure or a part thereof, including a complex or building intended for sale to a buyer, wholly or partly, except where the entire consideration has been received after issuance of completion certificate, where required, by the competent authority or after its first occupation, whichever is earlier.

Explanation.—For the purposes of this clause—

- (1) the expression "competent authority" means the Government or any authority authorized to issue completion certificate under any law for the time being in force and in case of non-requirement of such certificate from such authority, from any of the following, namely:—
 - (i) an architect registered with the Council of Architecture constituted under the Architects Act, 1972; or
 - (ii) a chartered engineer registered with the Institution of Engineers (India); or
 - (iii) a licensed surveyor of the respective local body of the city or town or village or development or planning authority;
- (2) the expression "construction" includes additions, alterations, replacements or remodelling of any existing civil structure;

- (c) temporary transfer or permitting the use or enjoyment of any intellectual property right;
- (d) development, design, programming, customization, adaptation, up gradation, enhancement, implementation of information technology software;
- (e) agreeing to the obligation to refrain from an act, or to tolerate an act or a situation, or to do an act; and
- (f) transfer of the right to use any goods for any purpose (whether or not for a specified period) for cash, deferred payment or other valuable consideration.

6. Composite supply

The following composite supplies shall be treated as a supply of services, namely:—

- (a) works contract as defined in clause (119) of section 2; and
- (b) supply, by way of or as part of any service or in any other manner whatsoever, of goods, being food or any other article for human consumption or any drink (other than alcoholic liquor for human consumption), where such supply or service is for cash, deferred payment or other valuable consideration.

7. Supply of Goods

The following shall be treated as supply of goods, namely:—

Supply of goods by any unincorporated association or body of persons to a member thereof for cash, deferred payment or other valuable consideration.

Schedule-III

***ACTIVITIES OR TRANSACTIONS WHICH SHALL BE TREATED
NEITHER AS A SUPPLY OF GOODS NOR A SUPPLY OF
SERVICES***

1. Services by an employee to the employer in the course of or in relation to his employment.
2. Services by any court or Tribunal established under any law for the time being in force.
3. (a) the functions performed by the Members of Parliament, Members of State Legislature, Members of Panchayats, Members of Municipalities and Members of other local authorities;

(b) the duties performed by any person who holds any post in pursuance of the provisions of the Constitution in that capacity; or

- (c) the duties performed by any person as a Chairperson or a Member or a Director in a body established by the Central Government or a State Government or local authority and who is not deemed as an employee before the commencement of this clause.
4. Services of funeral, burial, crematorium or mortuary including transportation of the deceased.
 5. Sale of land and, subject to clause (b) of paragraph 5 of Schedule II, sale of building.
 6. Actionable claims, other than lottery, betting and gambling.

Explanation.—For the purposes of paragraph 2, the term "court" includes District Court, High Court and Supreme Court.

Tax Liability on a composite or a mixed supply as per Section 8 of CGST bill

8. The tax liability on a composite or a mixed supply shall be determined in the following manner, namely:—
- (a) a composite supply comprising two or more supplies, one of which is a principal supply, shall be treated as a supply of such principal supply; and
 - (b) a mixed supply comprising two or more supplies shall be treated as a supply of that particular supply which attracts the highest rate of tax.

***Levy and Collection as per Section 9 of CGST
Bill***

9. (1) Subject to the provisions of sub-section (2), there shall be levied a tax called the central goods and services tax on all intra-State supplies of goods or services or both, except on the supply of alcoholic liquor for human consumption, on the value determined under section 15 and at such rates, not exceeding twenty per cent., as may be notified by the Government on the recommendations of the Council and collected in such manner as may be prescribed and shall be paid by the taxable person.
- (2) The central tax on the supply of petroleum crude, high speed diesel, motor spirit (commonly known as petrol), natural gas and aviation turbine fuel shall be levied with effect from such date as may be notified by the Government on the recommendations of the Council.

- (3) The Government may, on the recommendations of the Council, by notification, specify categories of supply of goods or services or both, the tax on which shall be paid on reverse charge basis by the recipient of such goods or services or both and all the provisions of this Act shall apply to such recipient as if he is the person liable for paying the tax in relation to the supply of such goods or services or both.
- (4) The central tax in respect of the supply of taxable goods or services or both by a supplier, who is not registered, to a registered person shall be paid by such person on reverse charge basis as the recipient and all the provisions of this Act shall apply to such recipient as if he is the person liable for paying the tax in relation to the supply of such goods or services or both.

(5) The Government may, on the recommendations of the Council, by notification, specify categories of services the tax on intra-State supplies of which shall be paid by the electronic commerce operator if such services are supplied through it, and all the provisions of this Act shall apply to such electronic commerce operator as if he is the supplier liable for paying the tax in relation to the supply of such services:

Provided that where an electronic commerce operator does not have a physical presence in the taxable territory, any person representing such electronic commerce operator for any purpose in the taxable territory shall be liable to pay tax:

Provided further that where an electronic commerce operator does not have a physical presence in the taxable territory and also he does not have a representative in the said territory, such electronic commerce operator shall appoint a person in the taxable territory for the purpose of paying tax and such person shall be liable to pay tax.

Thank You

CA Atul Kumar Gupta

Email: atul@servicetax.net,

Mobile: 9810103611